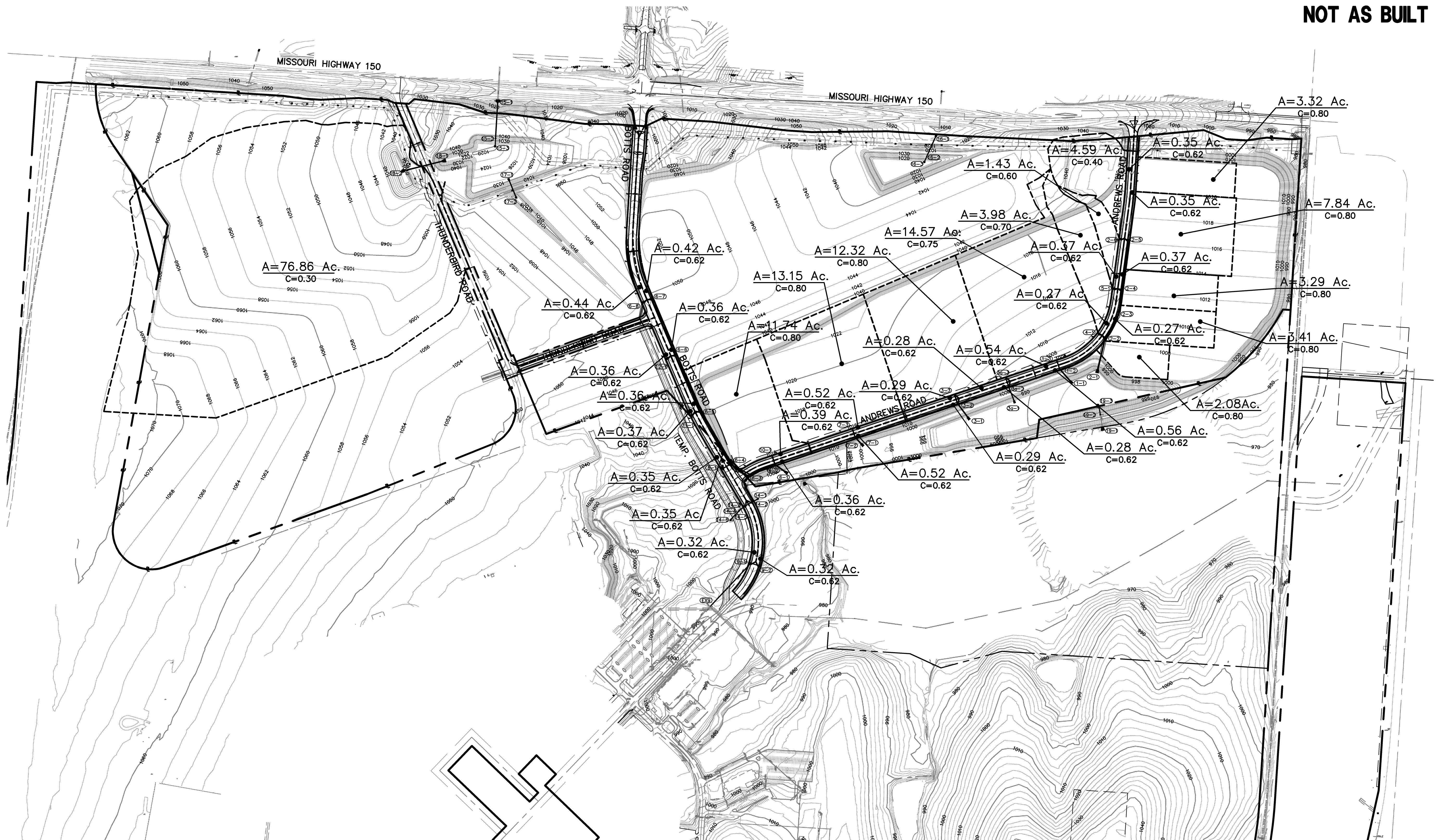
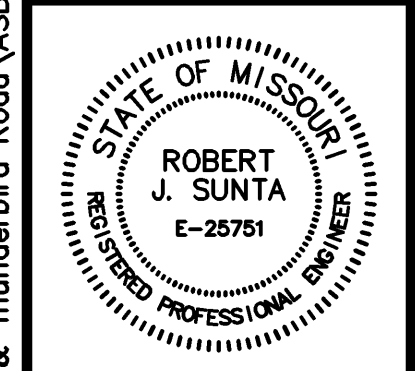


NOT AS BUILT



Prepared for Review.	R.J.S.	R.J.S.	P.E. SIGNATURE
Revised all drainage areas			
06-07-07			DATE
01-25-08			

DRAINAGE PLAN
CENTERPOINT-KCS
INTERMODAL CENTER



Reviewed By:	S.E.C.
Designed By:	R.J.S.
Drafted By:	J.W.W.
Lutjen Project No.:	07165

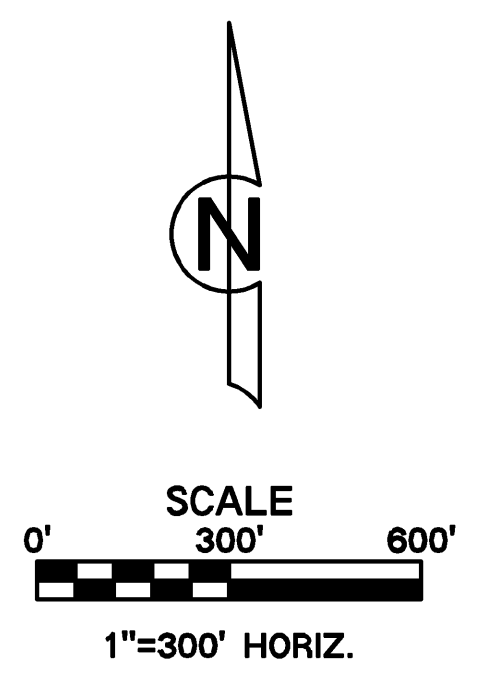
LUTJEN

8350 N. Saint Clair Ave.
 Kansas City, MO 64151
 816.567.4320
 816.567.1393 fax
 www.lutjen.com

surveying
 planning
 engineering
 landscape architecture

Sheet No.:
18

- 0-0 - STORM STRUCTURE NUMBER
- A - AREA
- C - RUNOFF COEFFICIENT
- RIDGE LINE
- FINISHED 2' CONTOURS
- FINISHED 10' CONTOURS
- EXISTING STORM SEWER
- PROPOSED STORM SEWER
- FUTURE STORM SEWER
- EXISTING SANITARY SEWER
- PROPOSED SANITARY SEWER
- FUTURE SANITARY SEWER
- EXISTING WATER MAINS
- PROPOSED WATER MAINS
- FUTURE WATER MAINS
- EXISTING RIGHT-OF-WAY
- PROPOSED RIGHT-OF-WAY
- FUTURE RIGHT-OF-WAY
- PROPERTY LINE



Location: N:\Engineering\Richard Gebaur - 07165 & 07166\Drafting\Botts & Thunderbird Road\ASBUILTS\Street & Storm\DR1 - 07165.dwg