

AS BUILT

Date Surveyed: January 29, 2009
 Project No.: 200810791
 SEC4: 70097223
 Field Acceptance Date:
 File No.:

SUMMARY OF QUANTITIES

ITEM	UNIT	PLAN	AS-BUILT	CONTRACT NO.
Street				
Fine Grading	S.Y.	13,449	13,449	5
CG-1 Curb and Gutter (Wet)	L.F.	4,346	4,346	6
Saw Cut, Mill & Overlay	L.S.	1	1	7
2" Asphalt Surface	S.Y.	7,721	7,721	7
9" Asphalt Base	S.Y.	7,721	7,721	7
8" Portland Cement Concrete	S.Y.	4,532	4,532	7
5' Sidewalk	L.F.	4,327	4,327	8
Sidewalk Ramp	Ea.	4	4	9
4" Dashed White Thermoplastic	L.F.	3,938	3,938	9
4" Double Solid Yellow Thermoplastic	L.F.	2,049	2,049	9
Painted Median	S.Y.	226	226	9
Storm				
Std. Curb Inlet (5'x3' Inside)	Ea.	6	6	10
Extra Depth on 5'x3' Curb Inlet	V.F.	22.85	22.70	10
Std. Curb Inlet (5'x4' Inside)	Ea.	1	1	10
Extra Depth on 5'x4' Curb Inlet	V.F.	7.67	7.75	10
Std. Curb Inlet (5'x5' Inside)	Ea.	3	3	10
Extra Depth on 5'x5' Curb Inlet	V.F.	22.59	22.50	10
Std. Curb Inlet (8'x5' Inside)	Ea.	1	1	10
Extra Depth on 8'x5' Curb Inlet	V.F.	11.64	11.75	10
Std. Manhole (6' Dia. Inside)	Ea.	1	1	10
Extra Depth on 6' Dia. Manhole	V.F.	5.54	5.80	10
48" RCP End Section	Ea.	1	1	10
15" RCP Pipe (Class III, Wall B)	L.F.	490.11	492.60	10
24" RCP Pipe (Class III, Wall B)	L.F.	556.93	556.93	10
30" RCP Pipe (Class III, Wall B)	L.F.	1096.30	1097.94	10
48" RCP Pipe (Class III, Wall B)	L.F.	70.57	70.71	10
Grouted Rip-Rap (d ₅₀ =1.25)	S.Y.	36	36	10
Connect to Existing	Ea.	1	1	10
Erosion Control				
Inlet Protection	Ea.	12	12	11

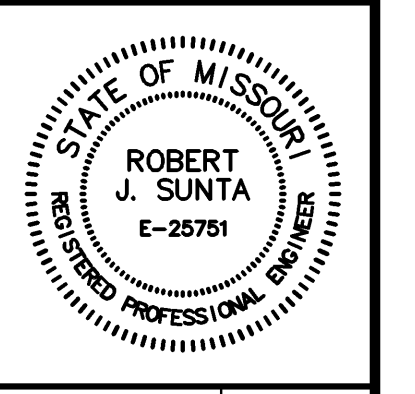
Note:
 Street embankment and rough grading were included with the previous Street Preliminary Permit SEC 5 70095944.

Summary of Quantities as indicated above and any quantities as shown within the plans have been provided for permitting purposes only and are not intended for use in preparation of contract documents. Quantities intended for, but not limited to, the preparation of proposals and bid documents shall be independently evaluated by the estimating party based upon the contents of these plans.

DATE	P.E. SIGNATURE	DESCRIPTION
01-25-08	R.J.S.	Added Sheet
05-20-08	R.J.S.	Revised per City Comments
06-25-08	R.J.S.	Added Sidewalk Ramp
02-09-09	R.J.S.	AS BUILT

SUMMARY OF QUANTITIES

CENTERPOINT-KCS INTERMODAL CENTER



Reviewed By: S.E.C.
 Designed By: R.J.S.
 Drafted By: J.W.W.
 Lutjen Project No.: 07165



Sheet No.:
7

Location: N:\Engineering\Richard Gebaur - 07165 & 07166\Drafting\Botts & Thunderbird Road\ASBUILT\Street & Storm\QUA - 07165.dwg