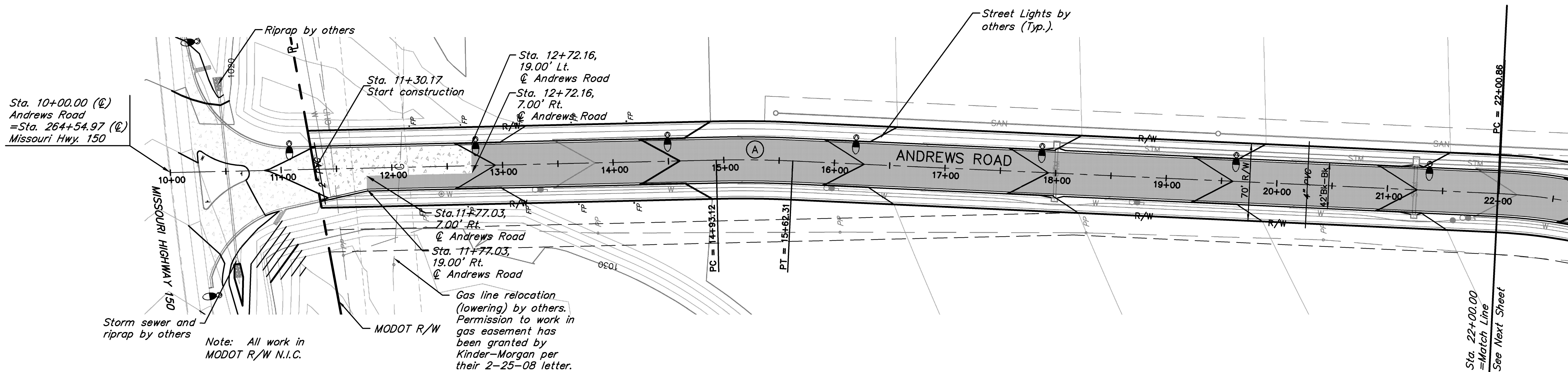
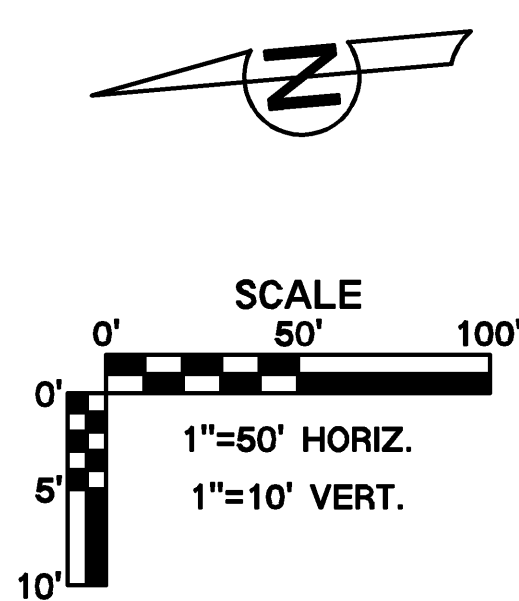


CURVE	RADIUS	LENGTH	TANGENT	DELTA	P.I. STA. (BK.)
A	1000.00'	69.19'	34.61'	03°57'51"	15+27.70



Note: All work in MODOT R/W N.I.C.

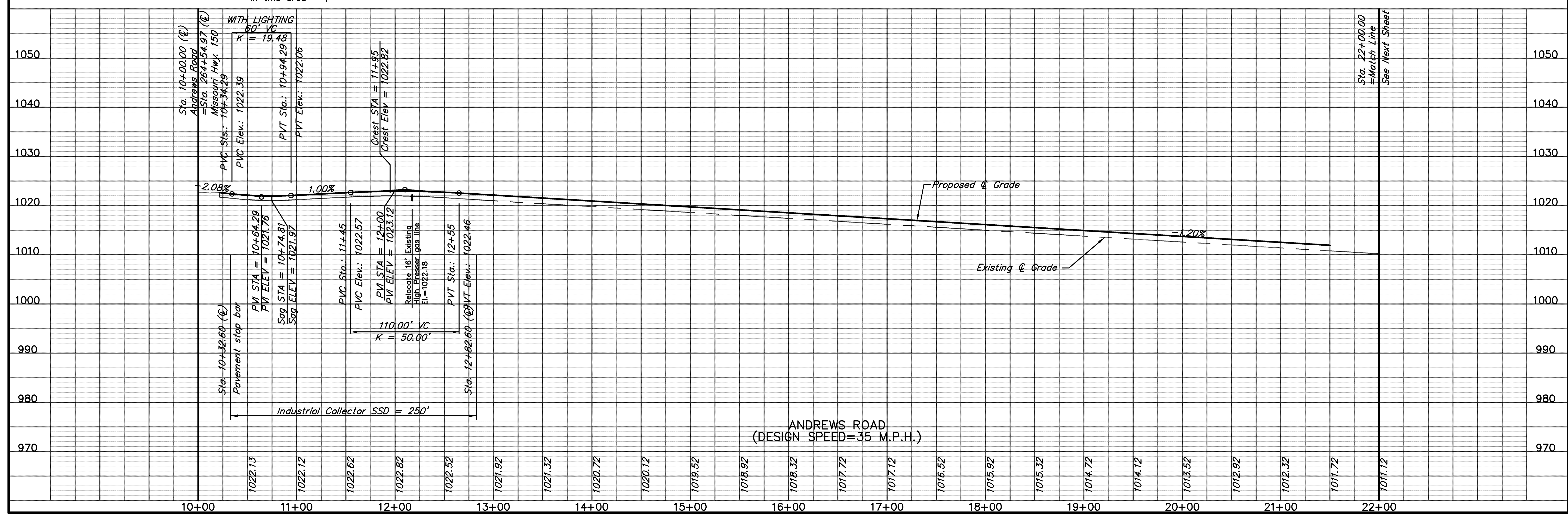
Gas line relocation (lowering) by others. Permission to work in gas easement has been granted by Kinder-Morgan per their 2-25-08 letter.



- 11" ASPHALT PAVEMENT  
(2" Type 3 asphaltic concrete surface with 9" min. Type 1 asphaltic concrete base course over 6" min. compacted subgrade 95% of standard max. density)
- 8" CONCRETE PAVEMENT  
(8" min. portland cement concrete pavement over 6" min. compacted subgrade 95% of standard max. density)

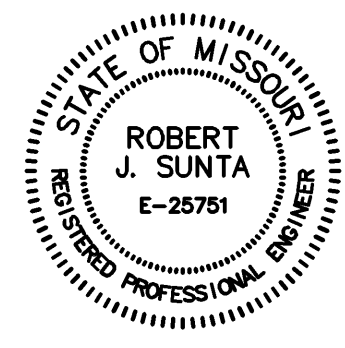
See Intersection Improvements Plans  
Obtain required permit from MODOT for work in this area

**NOT AS BUILT**



Location: N:\Engineering\Richard Gebaur - 07165 & 07166\Drafting\Andrews Road\As Built\Street & Storm\ST1 - 07216.dwg

**STREET PLAN & PROFILE**  
**CENTERPOINT-KCS**  
**INTERMODAL CENTER**



Reviewed By: S.E.C.  
Designed By: R.J.S.  
Drafted By: J.W.W.  
Lutjen Project No.: 07216



Sheet No.:  
**29**

DATE	P.E. SIGNATURE	DESCRIPTION
06-07-07	R.J.S.	Prepared for Review.
01-25-08	R.J.S.	Revised horizontal and vertical alignment
04-28-08	R.J.S.	Revised PCC limits
05-20-08	R.J.S.	Revised per City Comment