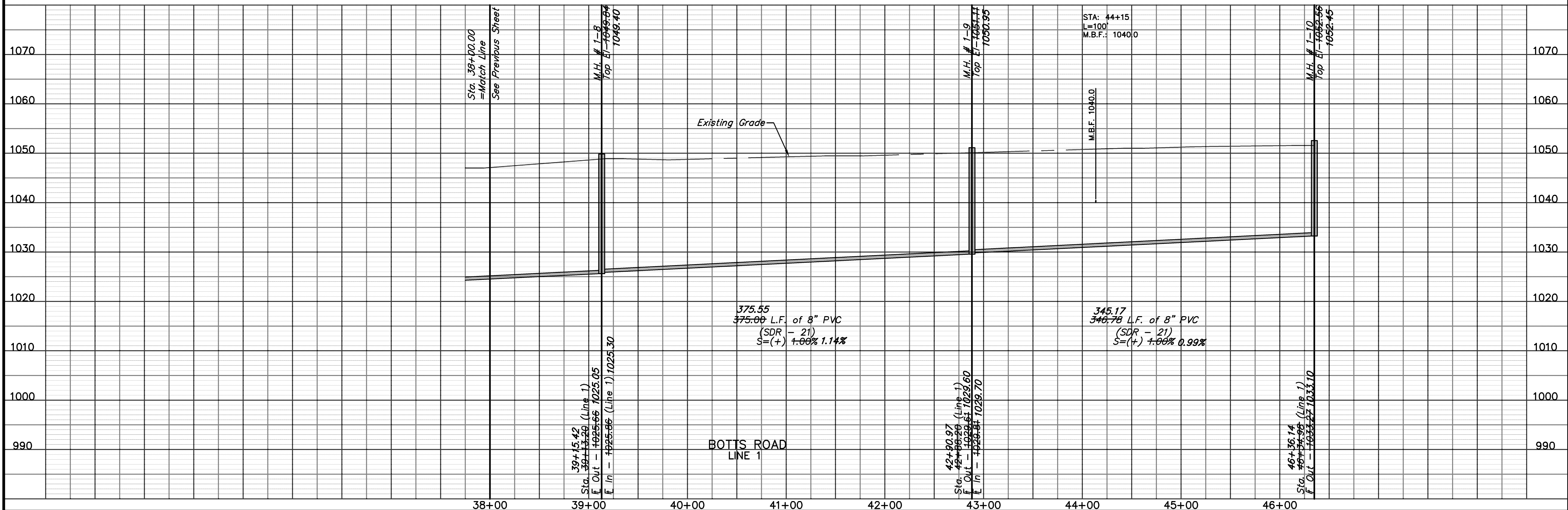


Tributary Area = 105.80 Acres
Flow Rate Factor = 0.005 cfs/acre
Design Flow Rate = 0.53 cfs
Pipe Capacity = 1.57 cfs
Pipe Velocity (full) = 4.50 fps

Tributary Area = 98.00 Acres
Flow Rate Factor = 0.005 cfs/acre
Design Flow Rate = 0.49 cfs
Pipe Capacity = 1.57 cfs
Pipe Velocity (full) = 4.50 fps



Location: N:\Engineering\Richard Gebaur - 07165 & 07166\Drafting\Botts & Thunderbird Road\ASBUILT\SANITARY\SAA4 - 07165.dwg

SANITARY PLAN & PROFILE

CENTERPOINT-KCS INTERMODAL CENTER

| DATE | P.E. SIGNATURE | DESCRIPTION |
|----------|----------------|---|
| 06-07-07 | R.J.S. | Prepared for Review. |
| 01-25-08 | R.J.S. | Revised per City Comments |
| 06-20-08 | R.J.S. | Revised per City Comments and Marked "Approved Plans" |
| 06-23-08 | R.J.S. | Revised per City Comments |
| 02-03-09 | R.J.S. | As built |

Reviewed By: R.J.S.
Designed By: M.G.H.
Drafted By: M.C.D.
Lutjen Project No.: 07165

LUTJEN

8350 N. Saint Clair Ave.
Kansas City, MO 64151
816.587.4320
816.587.1393 fax
www.lutjen.com

surveying
planning
engineering
landscape architecture

Sheet No.: **6**