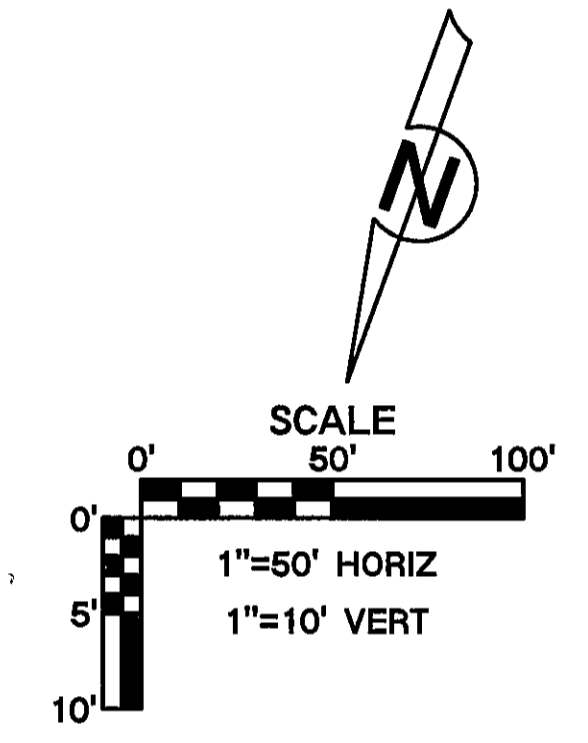
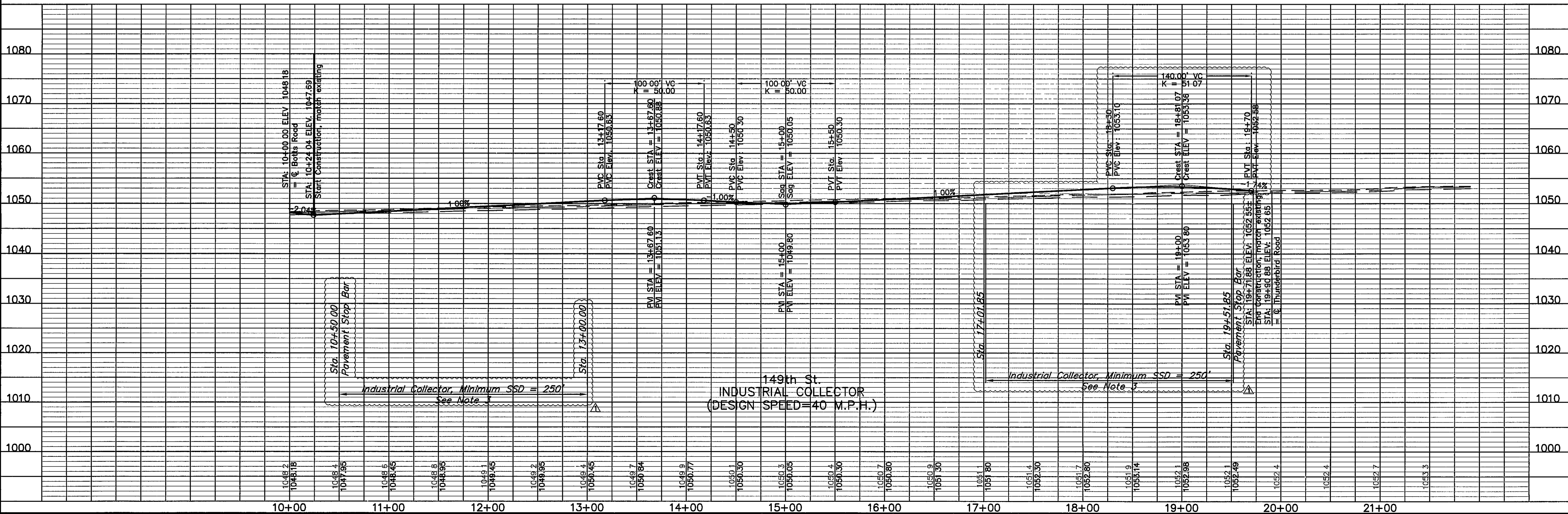
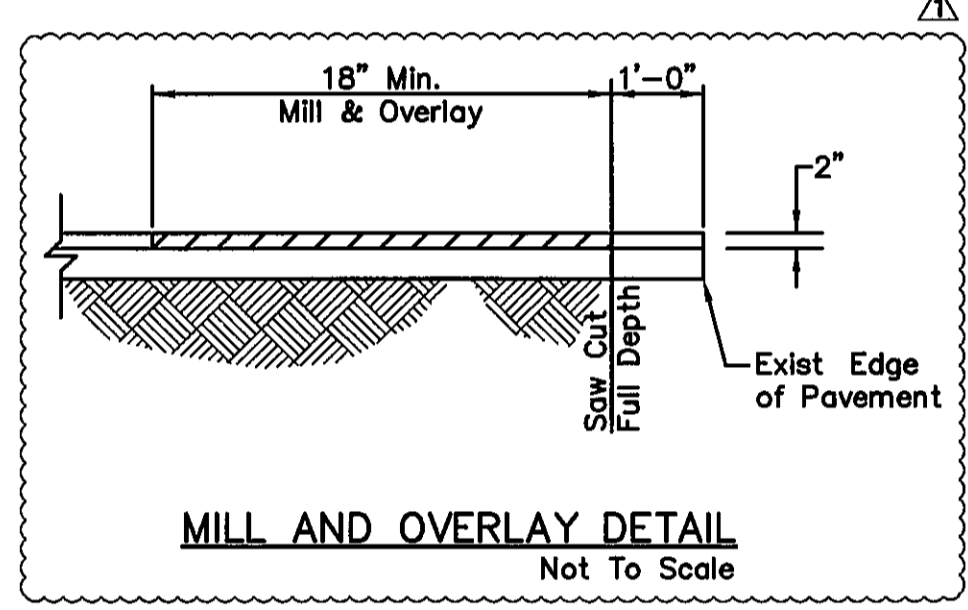


- NOTES**
- 1 No utility lines or easements exist underneath the proposed roadway
 - 2 Install Type A Expansion Joint (or Alternate) per KCMO Standard Drawing Number J-1 between existing and proposed PCC pavements. Coordinate with City Inspector.
 - 3 The available Stopping Sight Distance (SSD) along this street is 901 85'. This is the distance from stop bar at Botts Road to stop bar at Thunderbird Road



- 11" ASPHALT PAVEMENT
See Typical Section, Sheet 7
- 8" PCC PAVEMENT
See Typical Section, Sheet 7
- 4" CONCRETE SIDEWALK



STREET PLAN & PROFILE
CENTERPOINT-KCS
INTERMODAL CENTER
149th STREET

Reviewed By: S E C
 Designed By: R J S
 Drafted By: M C D
 Lutjen Project No: 07165

LUTJEN

8850 N. Saint Clair Ave
 Kansas City, MO 64151
 816 587 4320
 816 587 1993 fax
 www.lutjen.com

surveying
 planning
 engineering
 landscape architecture

Sheet No.:
5

DATE	P E INITIALS	DESCRIPTION
10-27-08	R J S	Issued for Bid
11-18-08	R J S	Submitted for Permit Review
02-10-09	R J S	Revised per City comments

Location: N:\Engineering\Richard Gebaur - 07165 & 07166\Drafting\49th Street\ST1 - 07165.dwg