

C.I. #33-1, Const. Std. Type 1
Curb Inlet (5'x3' Inside)
Sta. 10+48.64 (Line 33)
=Sta. 10+85.17 (E)
149th St., 24.00' Lt.

33-1

C.I. #32-3, Const. Std. Type 1
Curb Inlet (5'x3' Inside)
Sta. 15+68.28 (Line 32)
=Sta. 14+99.99 (E)
149th St., 24.00' Lt

32-3

C.I. #32-1, Const. Std. Type 1
Curb Inlet (5'x3' Inside)
Sta. 11+13.34 (Line 32)
=Sta. 10+93.06 (E)
149th St., 24.00' Rt.

32-1

C.I. #32-2, Const. Std. Type 1
Curb Inlet (5'x3' Inside)
Sta. 15+20.28 (Line 32)
=Sta. 15+00.00 (E)
149th St., 24.00' Rt.

32-2

Line 6, CI-J #6-8
Direct A = 0.44 ac
Direct C = 0.62
Local CxA = 0.27 ac
Total CxA = 0.91 ac
Ant. K = 1.10
i = 7.92 in/hr
25 yr Q = 7.94 cfs
Cap = 22.92 cfs
Vel = 6.57 fps
Mann n = 0.013

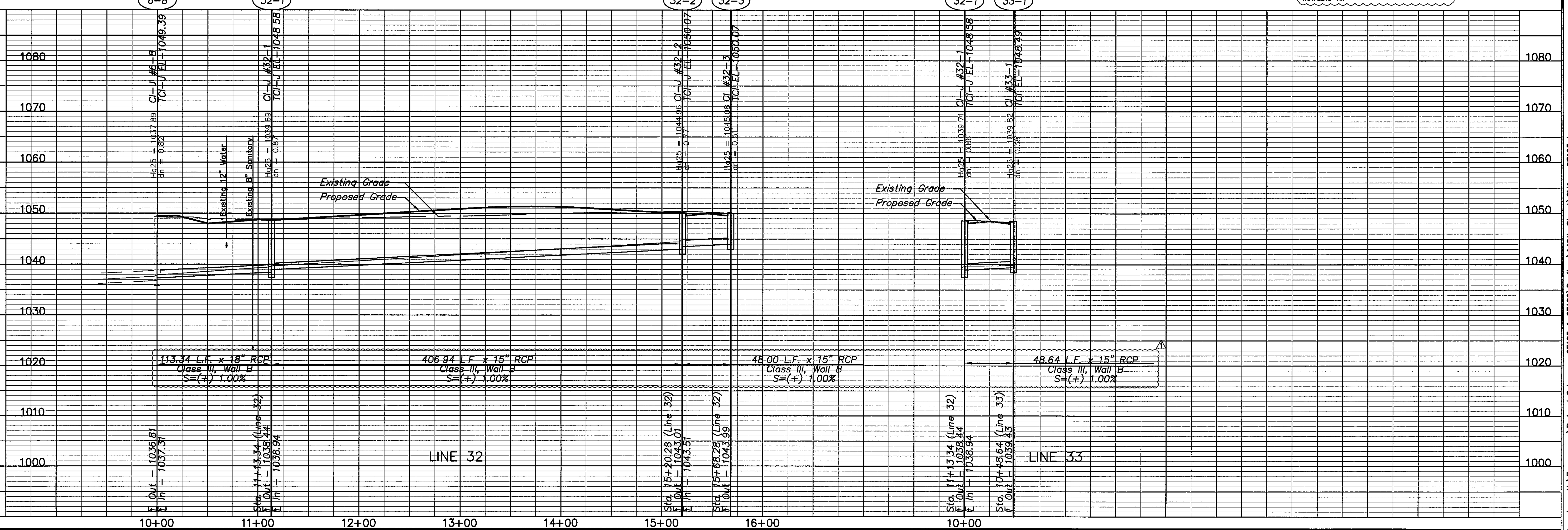
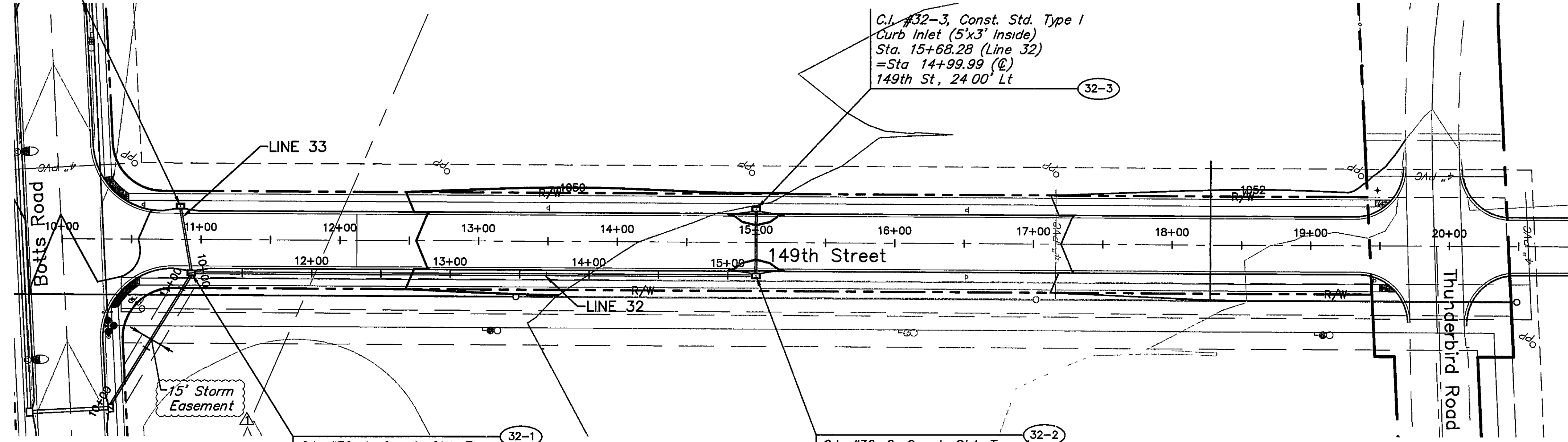
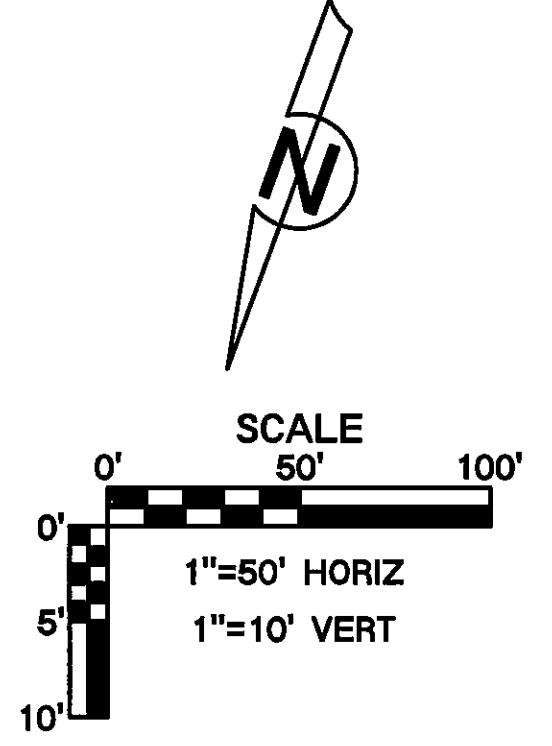
Line 32, CI-J #32-1
Direct A = 0.21 ac
Direct C = 0.62
Local CxA = 0.13 ac
Total CxA = 0.75 ac
Ant. K = 1.10
i = 8.07 in/hr
10 yr Q = 6.66 cfs
Cap = 10.50 cfs
Vel = 6.30 fps
Mann n = 0.013

Line 32, CI-J #32-2
Direct A = 0.39 ac
Direct C = 0.62
Local CxA = 0.24 ac
Total CxA = 0.48 ac
Ant. K = 1.10
i = 8.47 in/hr
10 yr Q = 4.51 cfs
Cap = 6.46 cfs
Vel = 6.69 fps
Mann n = 0.013

Line 32, CI #32-3
Direct A = 0.39 ac
Direct C = 0.62
Local CxA = 0.24 ac
Total CxA = 0.24 ac
Ant. K = 1.10
i = 8.53 in/hr
10 yr Q = 2.27 cfs
Cap = 6.46 cfs
Vel = 4.80 fps
Mann n = 0.013

Line 33, CI #33-1
Direct A = 0.22 ac
Direct C = 0.62
Local CxA = 0.14 ac
Total CxA = 0.14 ac
Ant. K = 1.10
i = 8.53 in/hr
10 yr Q = 1.28 cfs
Cap = 6.46 cfs
Vel = 4.10 fps
Mann n = 0.013

NOTE
Contractor shall post a maintenance bond for storm sewer backfill (within public right-of-way) in lieu of using flowable fill



Location: N:\Engineering\Richard Gebaur - 07165 & 07166 Drafting\49th Street.SMT - 07165.dwg

10-27-08	RJS	Issued for Bid
11-18-08	RJS	Submitted for Permit Review
02-10-09	RJS	Revised per City comments
DATE	P E INITIALS	DESCRIPTION

STORM SEWER PLAN & PROFILE

CENTERPOINT-KCS

INTERMODAL CENTER

149th STREET

Reviewed By: SEC
Designed By: RJS
Drafted By: MCD
Lutjen Project No: 07165

LUTJEN

8350 N. Saint Clair Ave
Kansas City, MO 64151
816.887.4329
816.887.1393 fax
www.lutjen.com

surveying
planning
engineering
landscape architecture

Sheet No.:
4