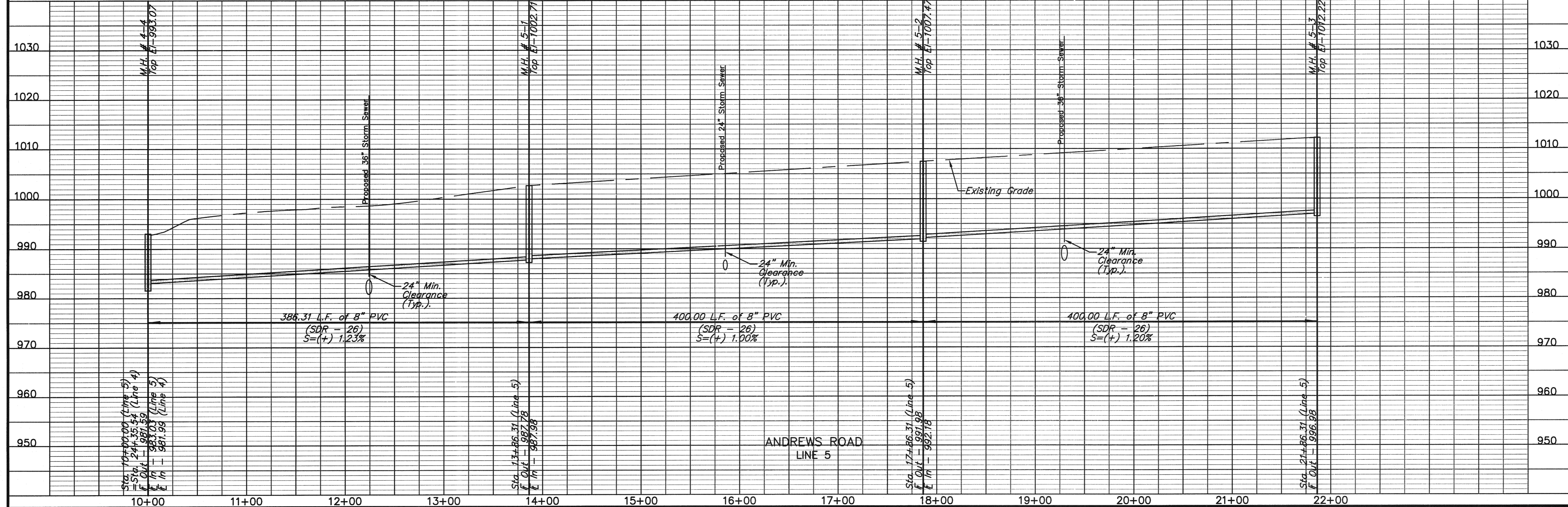
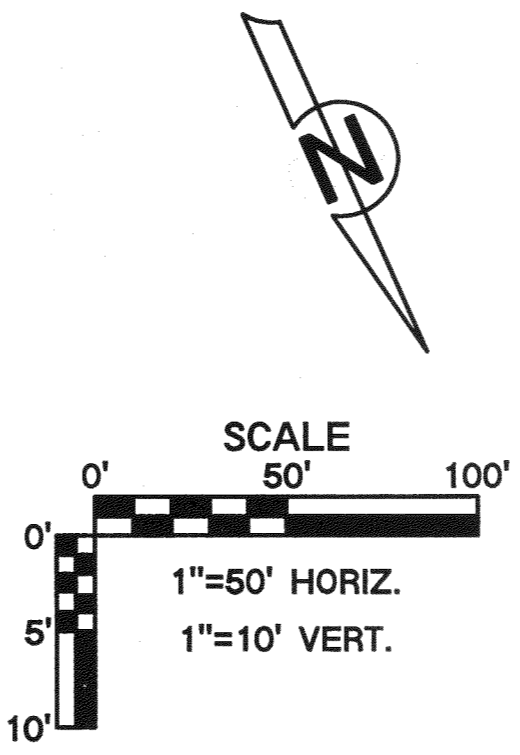


Tributary Area = 14.76 Acres
Flow Rate Factor = 0.005 cfs/acre
Design Flow Rate = 0.07 cfs
Pipe Capacity = 1.92 cfs
Pipe Velocity (full) = 5.51 fps

Tributary Area = 13.55 Acres
Flow Rate Factor = 0.005 cfs/acre
Design Flow Rate = 0.07 cfs
Pipe Capacity = 1.57 cfs
Pipe Velocity (full) = 4.50 fps

Tributary Area = 13.06 Acres
Flow Rate Factor = 0.005 cfs/acre
Design Flow Rate = 0.07 cfs
Pipe Capacity = 1.72 cfs
Pipe Velocity (full) = 4.93 fps



Location: N:\Engineering\Richard Gebour - 07165 & 07166\Drafting\Andrews Road\Sanitary\S44 - 07165.dwg

09-07-07	R.J.S.	Prepared for review
01-25-08	R.J.S.	Revised per City Comments
05-20-08	R.J.S.	Revised per City Comments
08-29-08	R.J.S.	Revised per City Comments

DATE

P.E. SIGNATURE

DESCRIPTION

SANITARY PLAN & PROFILE

CENTERPOINT-KCS

INTERMODAL CENTER

Reviewed By: S.E.C.
Designed By: R.J.S.
Drafted By: J.W.W.
Lutjen Project No.: 07216

8350 N. Saint Clair Ave.
Kansas City, MO 64151
816.587.4320
816.587.1393 fax
www.lutjen.com

surveying
planning
engineering
landscape architecture

Sheet No.:
12