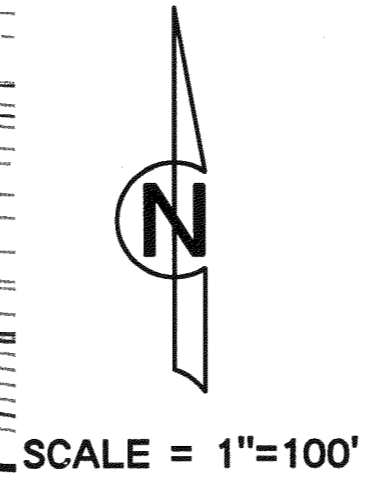
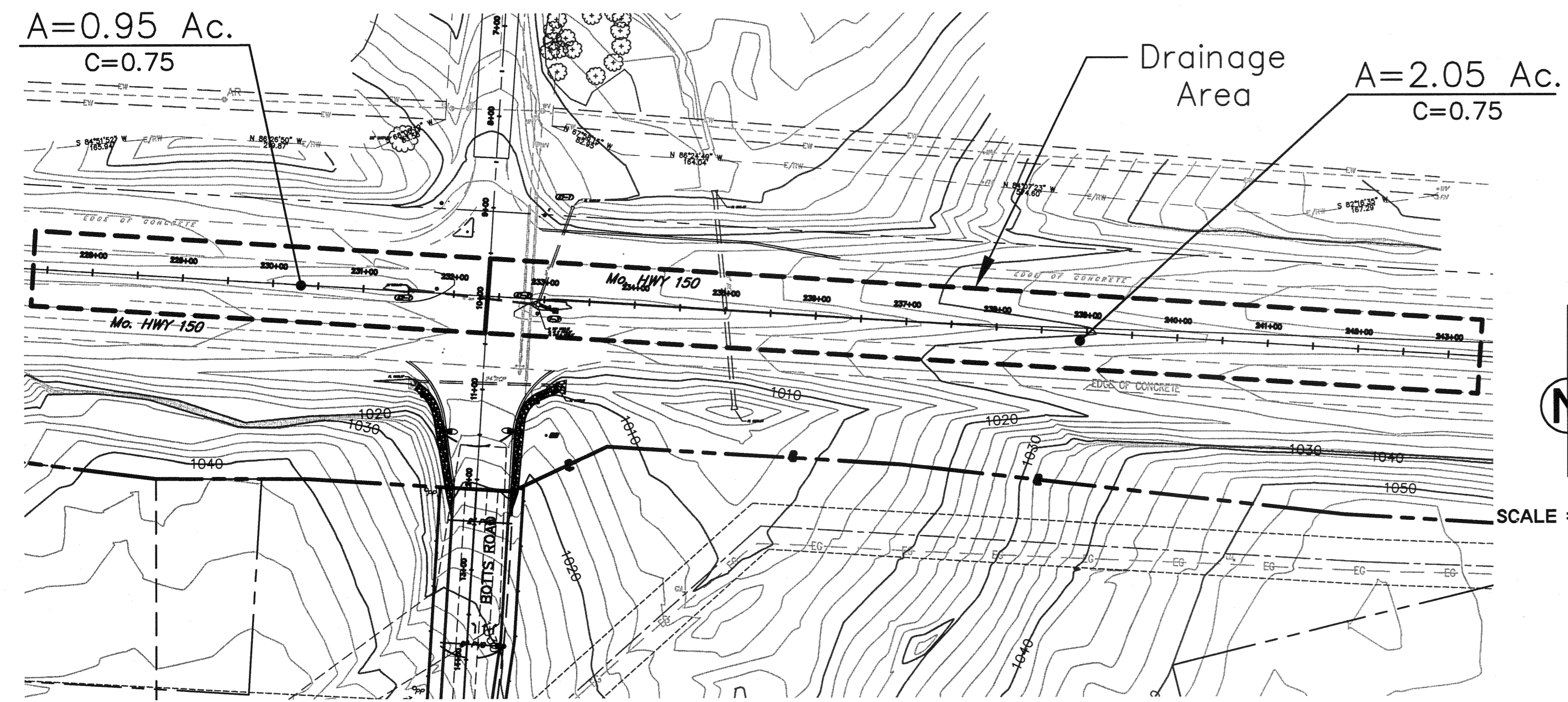
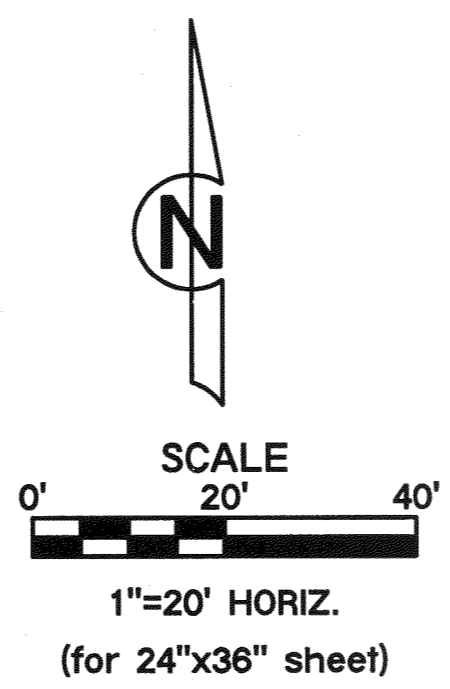


LINE NO.	STA.	STRUC. NO.	LOCAL C	LOCAL A	LOCAL C X A	TOTAL C X A	INLET TIME (min)	TOTAL Tc (min)	"K"	"C" (ave.)	50-YR I (in/hr)	A (Ac)	Q (cfs)	PPE DIA. (in)	MANN N	PPE SLOPE (%)	MANN'S FULL CAP (cfs)	DES VEL (fps)	VEL HEAD (ft)	FLOW DEPTH (ft)	PPE LEN (ft)	FLOW TIME (min)	
1	10+00.00	E1-1	-	-	-	2.25	0.00	5.43	1.20	0.75	9.23	3.00	24.92	24	0.013	0.00%	0.00	7.93	0.98	24.00	0.00	0.00	
1	11+14.42	E1-2	E1-1	0.00	0.00	0.00	0.00	5.25	1.20	0.75	9.30	3.00	25.11	24	0.013	1.85%	29.07	9.25	10.41	1.88	17.21	114.42	0.18
1	11+32.20	1-3	E1-2	0.75	2.05	1.54	1.54	5.04	5.04	1.20	0.75	9.38	2.05	24	0.012	1.00%	24.51	7.80	8.46	1.11	14.88	17.78	0.04
1	11+43.87	E2-1	E1-2	0.75	0.95	0.71	0.71	5.00	5.00	1.20	0.75	9.40	0.95	18	0.013	2.88%	17.21	9.74	9.57	1.42	8.85	143.87	0.25

LINE NO.	STA.	STRUC. NO.	OVERLAND LEN (ft)	FLOW S (%)	FLOW "C"	TIME (min)	GUTTER LEN (ft)	FLOW S (%)	FLOW VEL (fps)	TIME (min)	INLET TIME (min)	"K"	"C"	50-YR I (in/hr)	A (Ac)	Q (cfs)	US BYPASS (cfs)	TOTAL FLOW (cfs)	STREET SLOPE (%)	STREET XSLOPE (%)	10.5 CG-1 CAP (cfs)	NLET LEN (ft)	0.83 NLET CAP (cfs)	80% CAP (cfs)	BYPASS DS (cfs)
1	10+00.00	E1-1																							
1	11+14.42	E1-2																							
1	11+32.20	1-3	50	2.0%	0.90	2.02					5.04	1.20	0.75	9.38	2.05	17.31		17.31					21.70	17.36	
1	11+43.87	E2-1	34	2.0%	0.90	1.67					5.00	1.20	0.75	9.40	0.95	8.04		8.04					13.76	11.01	



Location: N:\Engineering\Richard Gabour - 07165 & 07166\Drafting\Botts & Thunderbird Road\Intersection (Mod01)\STM - 07165.dwg

Prepared for review.

K.L.S.

03-07-08

P.E. INITIALS

DATE

DESCRIPTION

STORM SEWER PLAN

CENTERPOINT - KCS

INTERMODAL CENTER

MISSOURI HIGHWAY 150 & BOTTS ROAD

INTERSECTION IMPROVEMENTS

Reviewed By: R.J.S.

Designed By: K.L.S.

Drafted By: M.C.D.

Lutjen Project No.: 07165

8350 N. Saint Clair Ave.
Kansas City, MO 64151
816.587.4320
816.587.1383 fax
www.lutjen.com

surveying
planning
engineering
landscape architecture

Sheet No.: **C9**